



Preparing your Pets for Emergencies

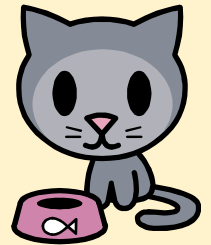


Indoor Pets

Do you have indoor pets such as birds, rodents, cats or dogs?



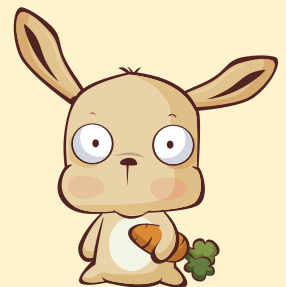
- Obtain a suitable secure pet carrier for your pet
- Obtain a suitable harness/lead for your pet
- Make sure your pet has a collar with name tag and telephone number
- Make sure your correct contact details are registered if your pet has been micro-chipped. If not, get your pet micro-chipped
- Keep a recent photo of your pet showing any distinguishing marks
- If your pet is on medications—make a list of them
- Keep copies of pet vaccination certificates and other important pet documents in your Emergency Kit



Garden Pets

Do you have garden pets like rabbits or guinea pigs?

- Make sure that hutches are in good repair and are weather tight
- Can you move hutches into a shed or garage to protect animals in poor weather
- Always keep a stock of food and bedding in case you are unable to go shopping
- Check your pet's drinking water as it may freeze in cold weather
- Be sure to regularly check on the welfare of your garden pets



Know the risks, be informed, get prepared!

www.norfolkprepared.gov.uk



[/NorfolkPrepared](https://twitter.com/NorfolkPrepared)

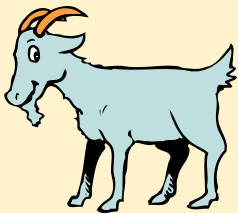




Livestock

Do you have livestock such as chickens, goats or horses?

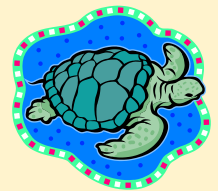
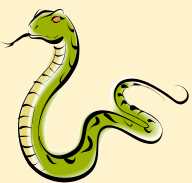
- Make sure that coops and stables are in good repair and weather tight. Check fences, gates and hedges
- Is the location where your animals are kept safe from flooding or other danger? If the location is at risk of flooding find a site nearby that is not at risk so you have somewhere to evacuate your animals if you need to
 - If danger threatens, make arrangements so that your animals can be put in their shelters and have adequate food and water
 - If you cannot move your animals, find out who can and make arrangements with them to do so
 - Keep a stock of feed and bedding for your animals
- If you do need to move larger animals to another location in an emergency, be sure to contact Norfolk County Council Trading Standards on 0344 800 8020 for advice



Exotic Pets

Do you have exotic pets such as lizards, snakes or fish?

- Can your pet be transported? Do you have a secure and safe carrier?
- How can you maintain the right conditions for your pet?
- Maintain a stock of feed and bedding for your pet
- Who can look after your pet if you need to evacuate, a pet buddy?



Know the risks, be informed, get prepared!

www.norfolkprepared.gov.uk



[/NorfolkPrepared](https://twitter.com/NorfolkPrepared)

