



# Preparing your Pets for Emergencies

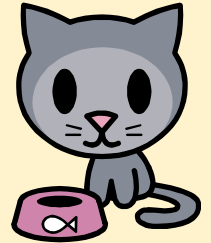


## Indoor Pets

**Do you have indoor pets such as birds, rodents, cats or dogs?**



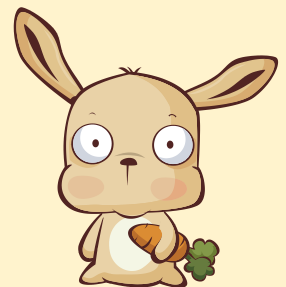
- Obtain a suitable secure pet carrier for your pet
- Obtain a suitable harness/lead for your pet
- Make sure your pet has a collar with name tag and telephone number
- Make sure your correct contact details are registered if your pet has been micro-chipped. If not, get your pet micro-chipped
- Keep a recent photo of your pet showing any distinguishing marks
- If your pet is on medications—make a list of them
- Keep copies of pet vaccination certificates and other important pet documents in your Emergency Kit



## Garden Pets

**Do you have garden pets like rabbits or guinea pigs?**

- Make sure that hutches are in good repair and are weather tight
- Can you move hutches into a shed or garage to protect animals in poor weather
- Always keep a stock of food and bedding in case you are unable to go shopping
- Check your pet's drinking water as it may freeze in cold weather
- Be sure to regularly check on the welfare of your garden pets



**Know the risks, be informed, get prepared!**

[www.norfolkprepared.gov.uk](http://www.norfolkprepared.gov.uk)



[/NorfolkPrepared](https://twitter.com/NorfolkPrepared)

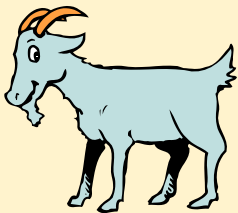




## Livestock

### Do you have livestock such as chickens, goats or horses?

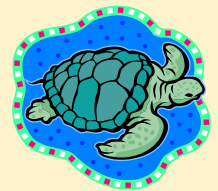
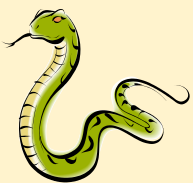
- Make sure that coops and stables are in good repair and weather tight. Check fences, gates and hedges
- Is the location where your animals are kept safe from flooding or other danger? If the location is at risk of flooding find a site nearby that is not at risk so you have somewhere to evacuate your animals if you need to
  - If danger threatens, make arrangements so that your animals can be put in their shelters and have adequate food and water
  - If you cannot move your animals, find out who can and make arrangements with them to do so
  - Keep a stock of feed and bedding for your animals
- If you do need to move larger animals to another location in an emergency, be sure to contact Norfolk County Council Trading Standards on 0344 800 8020 for advice



## Exotic Pets

### Do you have exotic pets such as lizards, snakes or fish?

- Can your pet be transported? Do you have a secure and safe carrier?
- How can you maintain the right conditions for your pet?
- Maintain a stock of feed and bedding for your pet
- Who can look after your pet if you need to evacuate, a pet buddy?



Know the risks, be informed, get prepared!

[www.norfolkprepared.gov.uk](http://www.norfolkprepared.gov.uk)



/NorfolkPrepared

